

# VISUAL Message Center

## Web SmartConsole

### How to Configure IIS

# 1. Table of Contents

|   |           |
|---|-----------|
| <b>1. Table of Contents</b> .....                               | <b>2</b>  |
| <b>2. Introduction</b> .....                                    | <b>3</b>  |
| <b>3. PHP</b> .....   | <b>4</b>  |
| 3.1 Download and Install PHP .....                              | 4         |
| 3.2 Review the PHP Configuration.....                           | 4         |
| <b>4. IIS</b> .....   | <b>6</b>  |
| 4.1 Configuring PHP on IIS .....                                | 6         |
| 4.2 Configuring the IIS Web site for the Web SmartConsole ..... | 7         |
| 4.3 Security Considerations .....                               | 11        |
| <b>5. About Tango/04 Computing Group</b> .....                  | <b>15</b> |
| <b>6. Legal notice</b> .....                                    | <b>16</b> |

## 2. Introduction

IIS (Internet Information Server) is Microsoft's Internet server. IIS includes a Web or Hypertext Transfer Protocol server and a File Transfer Protocol server, with additional capabilities for Microsoft's Windows NT and Windows 2000 Server operating systems. With IIS, Microsoft includes a set of programs for building and administering Web sites, a search engine, and support for writing Web-based applications that access databases. IIS is tightly integrated with the Windows NT and 2000 Servers in a number of ways, resulting in faster Web page serving. For further details regarding IIS see Microsoft's Web page.

The Web SmartConsole is Tango04's Web interface for its flagship product VISUAL Message Center SmartConsole. From the Web you can see the Enterprise Views as configured in VISUAL Message Center. Their Business Views reflect the current status at all times and you can view related Events to identify problems as they occur. The Web SmartConsole extends your monitoring capabilities allowing you to manage crucial systems worldwide. For further details regarding the Web SmartConsole please see the product documentation included on the Tango/04 product CD.

PHP is an open-source server-side scripting language the Web SmartConsole uses to create its dynamic Web pages. Installation of PHP is mandatory for the product to work.

This document describes how to download, install and configure PHP for use with IIS and the Web SmartConsole. This document further details how to configure Microsoft's IIS Internet server for use with the Web SmartConsole.

|   |
|---|
| This document is intended to be used with the Web SmartConsole Installation Guide |
|---|

## 3. PHP

This chapter explains how to download and install PHP. Furthermore, it helps you check a number of PHP settings that are important to the Web SmartConsole.

### 3.1 Download and Install PHP

**Step 1.** From the PHP Web site, <http://www.php.net/downloads.php>, download the installer and extensions for PHP version 4.

At the time of writing, the latest available version is 4.4.4 and the links for downloading are:

- Binary: <http://www.php.net/get/php-4.4.4-installer.exe/from/a/mirror>
- Extensions: <http://www.php.net/get/php-4.4.4-Win32.zip/from/a/mirror>

**Step 2.** Install PHP with the default settings, and enable the configuration for the current version of IIS:

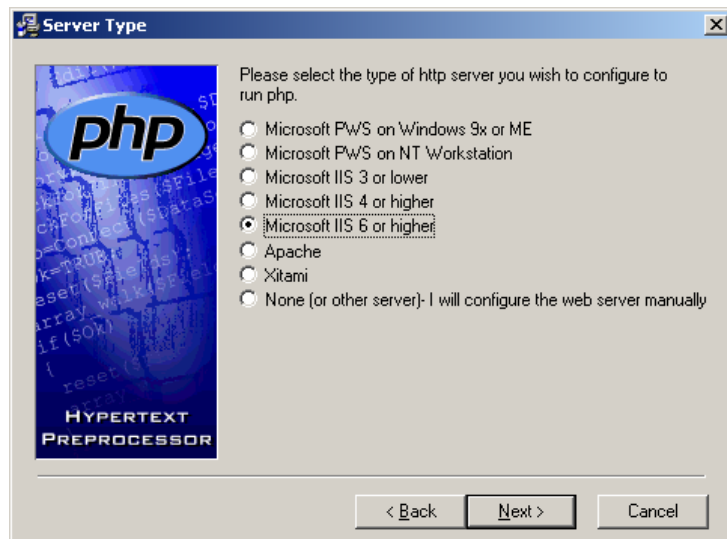


Figure 1 - Permission settings for IIS\_WPG user

**Step 3.** Copy the file php4\_ts.dll to the folder windows\system32

**Step 4.** Decompress the extensions file in the folder where you installed PHP (folder C:\PHP by default).

### 3.2 Review the PHP Configuration

The installation of the Web SmartConsole creates the file C:\windows\php.ini, which contains a number of settings specific to the Web SmartConsole. When you install PHP it is possible that the PHP installation overwrites this file and the settings are lost. Therefore, after completing the PHP installation, it is important to check that the settings are correct.

Open the file C:\windows\php.ini and review the following:

**Step 1.** Extensions folder

Configure what folder to use for decompressing the extensions. This folder should be:

```
extension_dir = "C:\PHP\extensions"
```

**Step 2.** Check that the extensions are enabled.

Enabled extensions do not start with a semi-colon (;) and should appear as follows:

```
extension=php_bz2.dll           extension=php_pdf.dll
extension=php_curl.dll          extension=php_sockets.dll
extension=php_domxml.dll        extension=php_xmlrpc.dll
extension=php_gd2.dll           extension=php_xslt.dll
extension=php_gettext.dll        extension=php_zip.dll
extension=php_imap.dll           extension=php_winbinder.dll
extension=php_mcrypt.dll         extension=php_wsm.dll
extension=php_oci8.dll
```

**Step 3.** Check for the CGI redirect

Make sure the following line exists in the file (note that it should not start with a semi-colon (;))

```
cgi.force_redirect = 0
```

## 4. IIS

To work with the Web SmartConsole, you must enable PHP on your Internet Server. You will also need to add the Web SmartConsole Web site to your IIS Server and check a number of settings to complete the integration of the Web SmartConsole and the IIS Internet Server.

This chapter explains how to enable PHP on your IIS Server and how to configure the IIS Server to work with the Web SmartConsole.

### 4.1 Configuring PHP on IIS

To enable PHP add a new extension to the Web server

- Open the folder Web Service Extensions and right-click the Web Service Extensions Panel.
- From the shortcut menu that appears, select Add a new Web service extension.

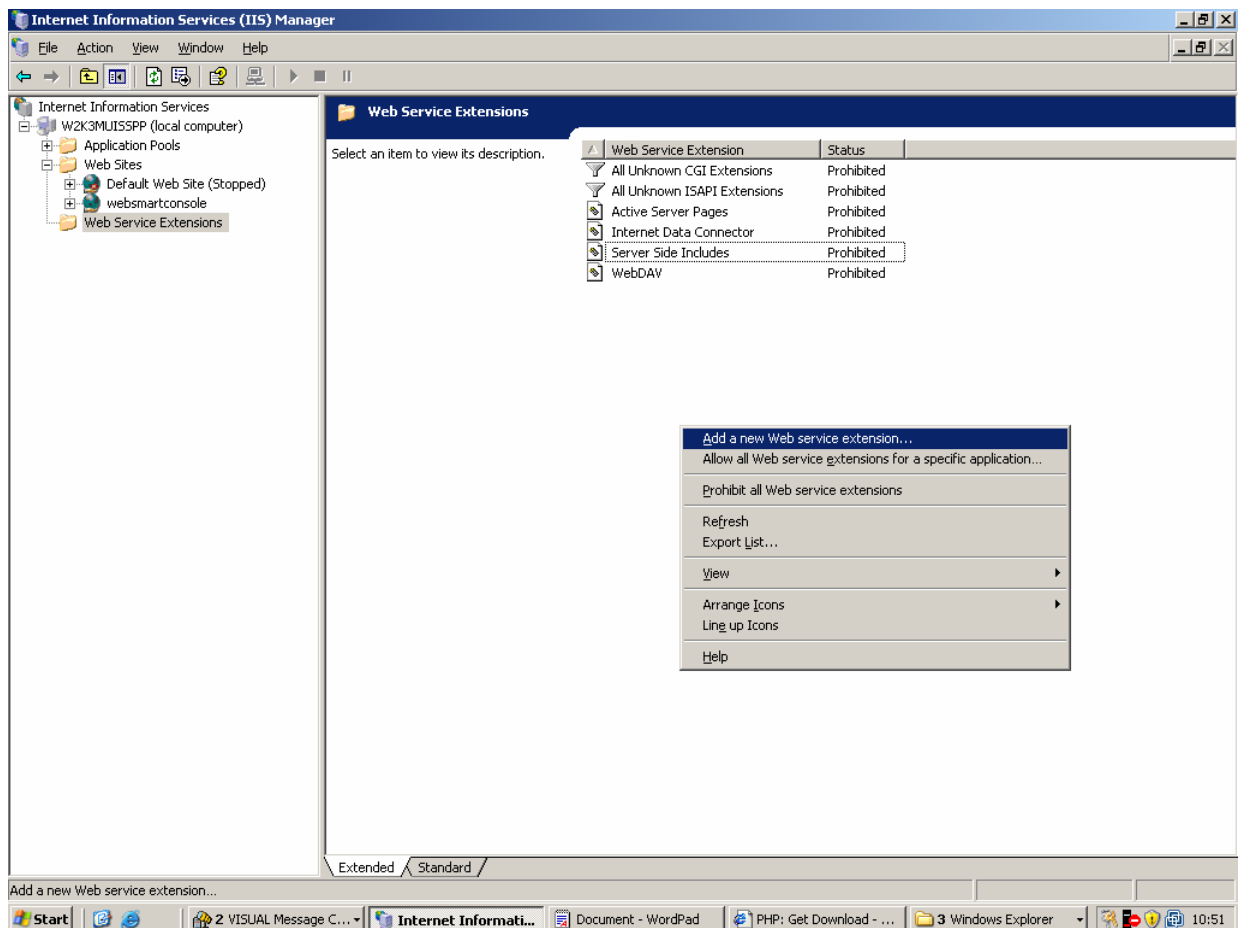


Figure 2 - Add a new Web service extension

- Enter the extension name (PHP) and add the required files for the extension. By default the required files are located in the folder C:\PHP

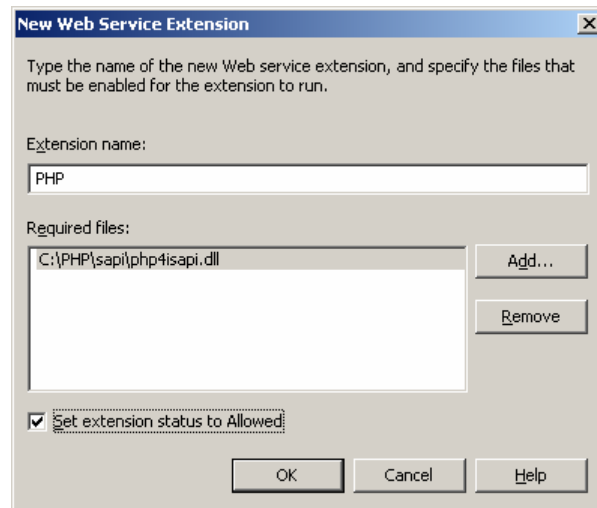


Figure 3 - Entering the Web service extension details

## 4.2 Configuring the IIS Web site for the Web SmartConsole

**Step 1.** Add a new Web site in the IIS folder Web Sites.

To open the Web site creation wizard in IIS, right-click the folder Web Sites, point to New and select Web Site.

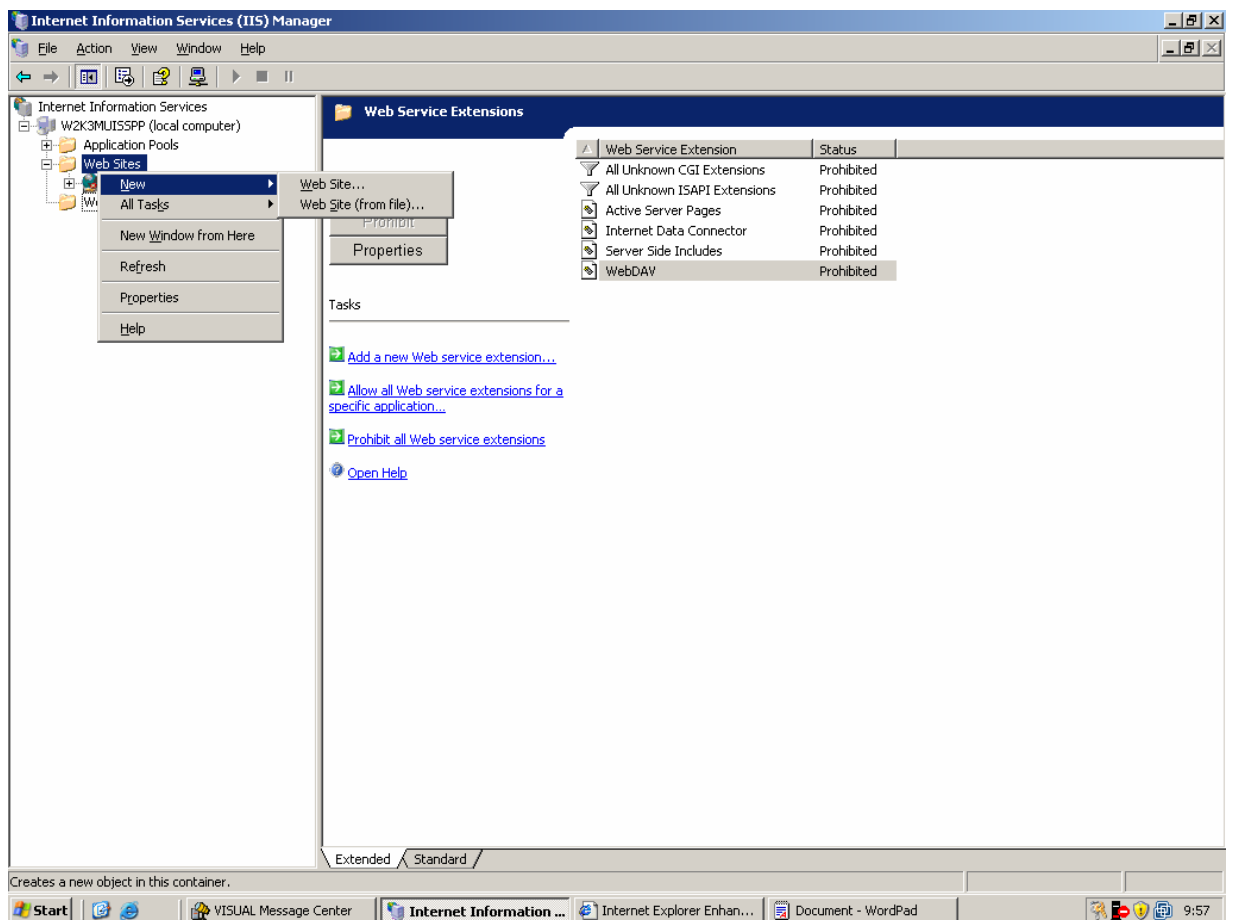


Figure 4 - Opening the IIS Web site creation wizard

Enter a description for the web site (for example websmartconsole) and click Next to continue. Accept the default IP Address and Port settings.

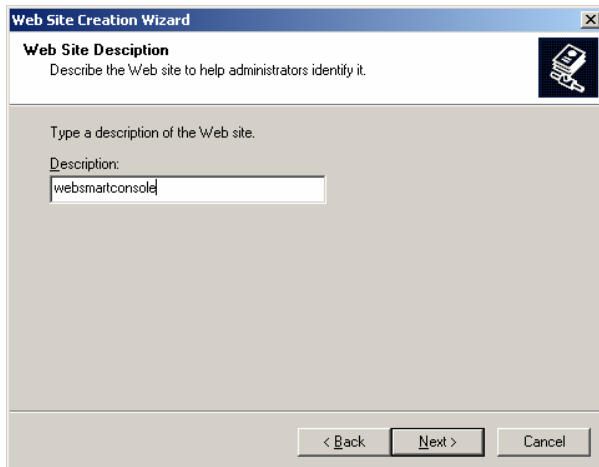


Figure 5 – Enter a description for the Web site

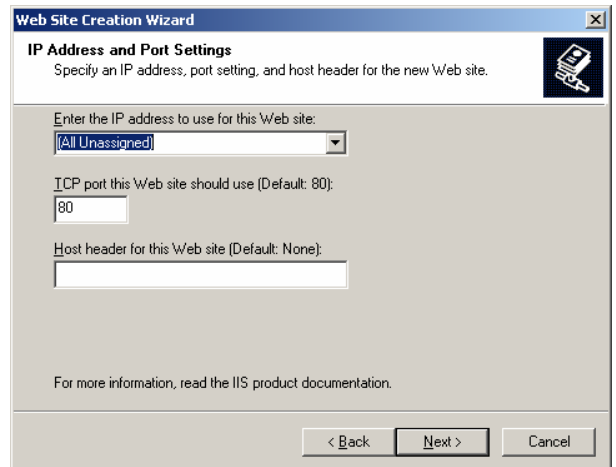


Figure 6 – Enter the IP Address and Port settings

Next, configure the root folder of the Web SmartConsole. By default the root directory is C:\Fast\www. We recommend you allow anonymous access to the Web site, as the Web SmartConsole has its own security settings. Click next to continue.

Set the site access permissions as shown in the following images:

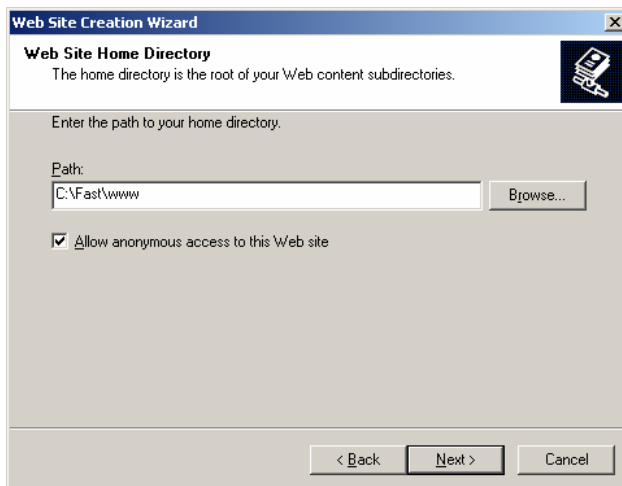


Figure 7 – Configure the root folder of the Web SmartConsole

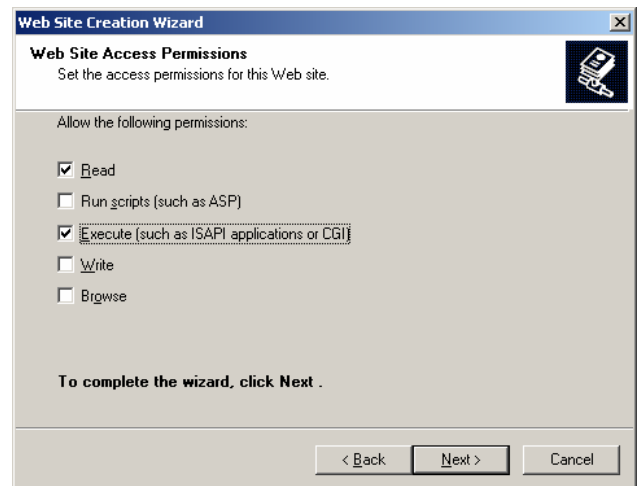


Figure 8 - Set the Web site access permissions

**Step 2.** Edit the properties of the new Web site (websmartconsole in our example).

To open the Web Site properties, right click websmartconsole and select Properties.

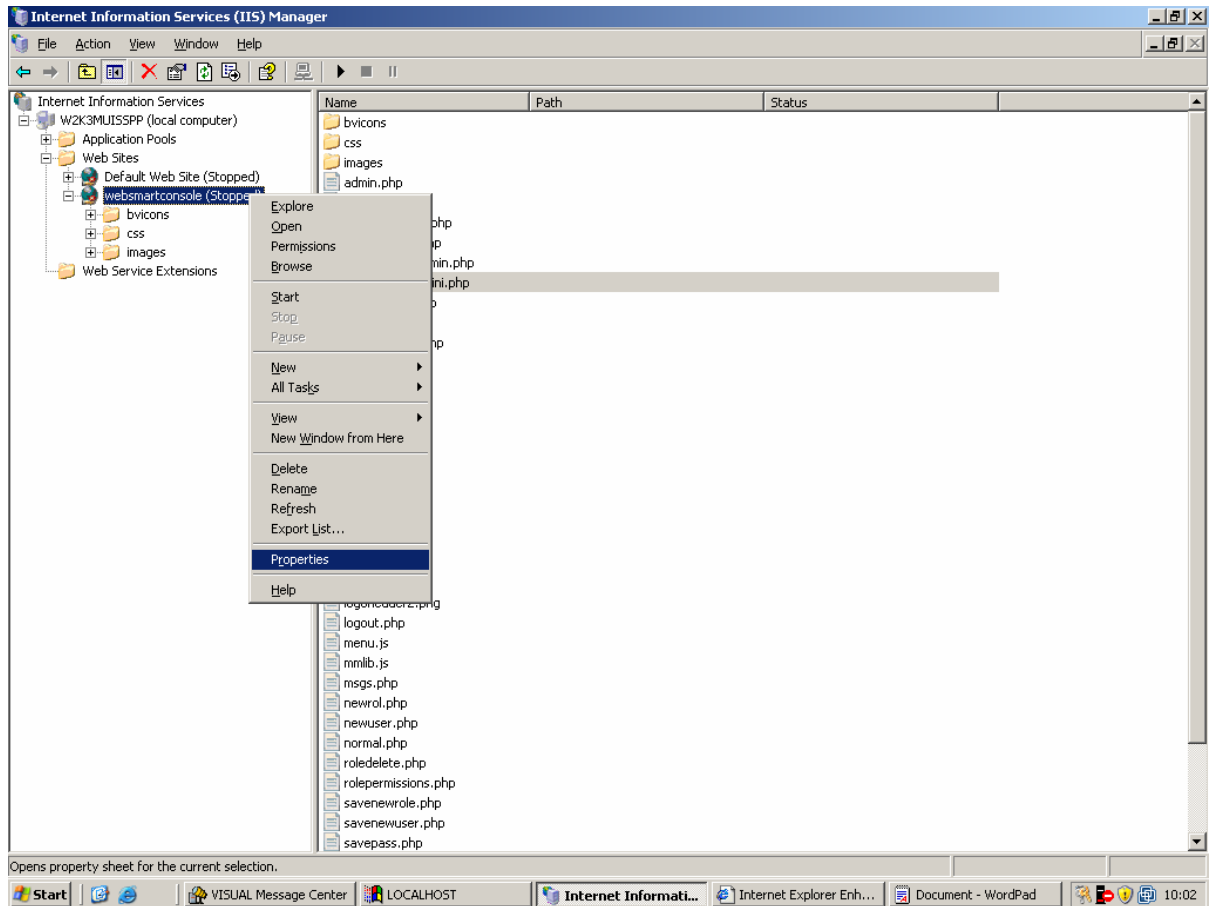


Figure 9 – Opening the Web site properties

In the Documents tab, select Enable default content page and enter the file index.php.

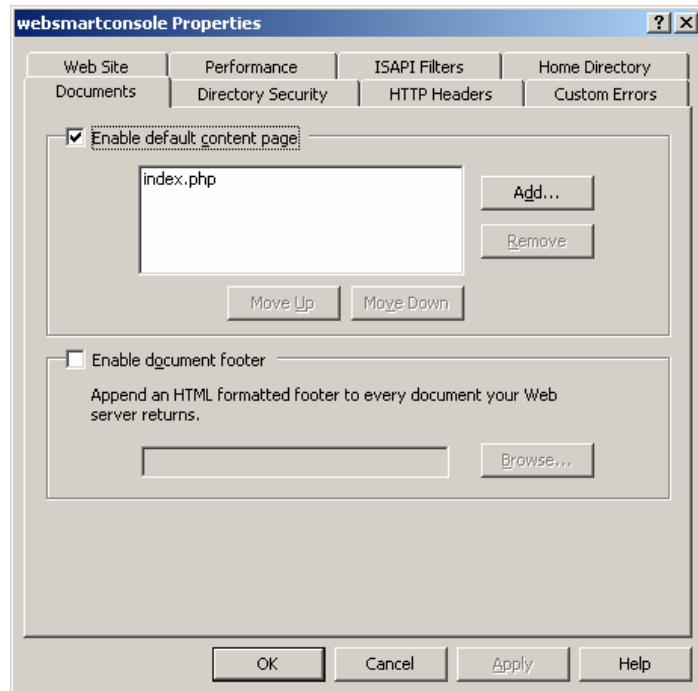


Figure 10 – Enable the default content page

Next edit the site configuration. Open the Home Directory tab and click the Configuration button.

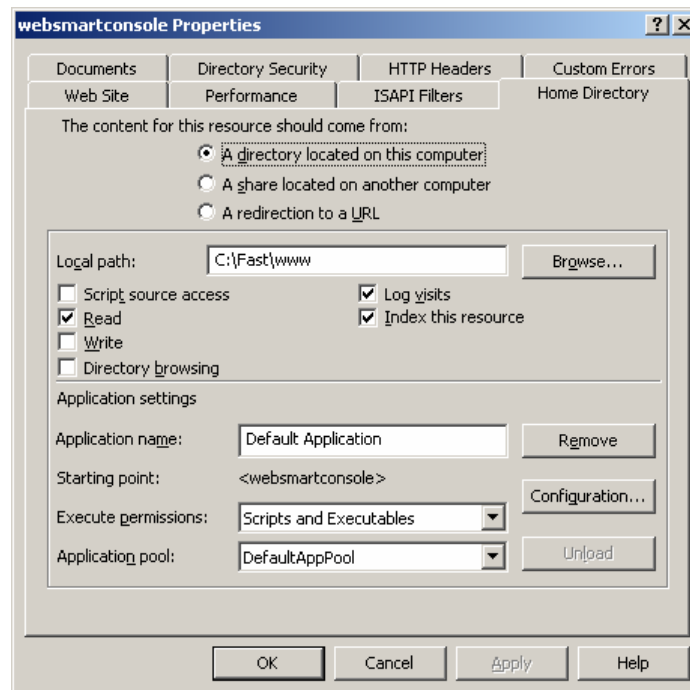


Figure 11 – Opening the site configuration

In the window that appears, edit the application extension .php. If it does not yet exist add it now.

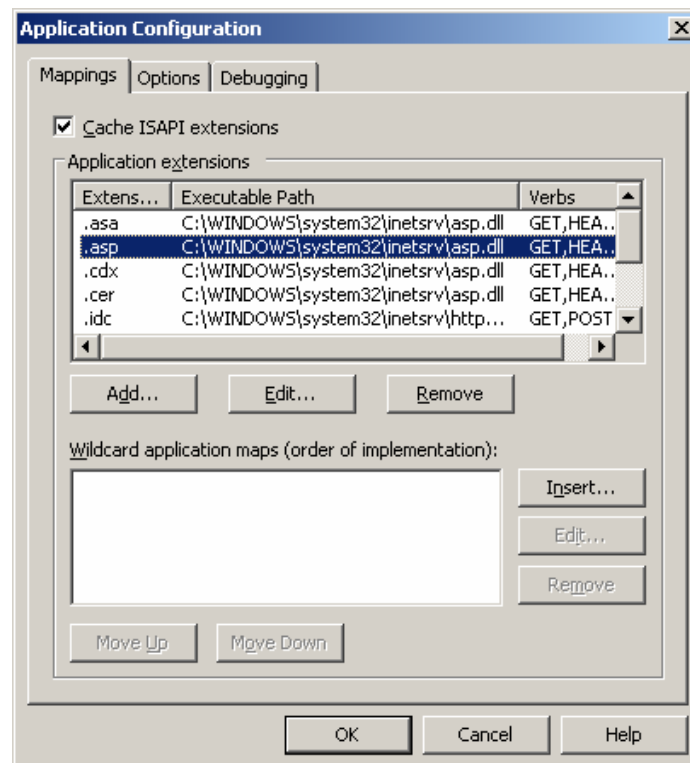


Figure 12 – Adding/Editing the PHP application extension

Map the application extension as shown in the next image

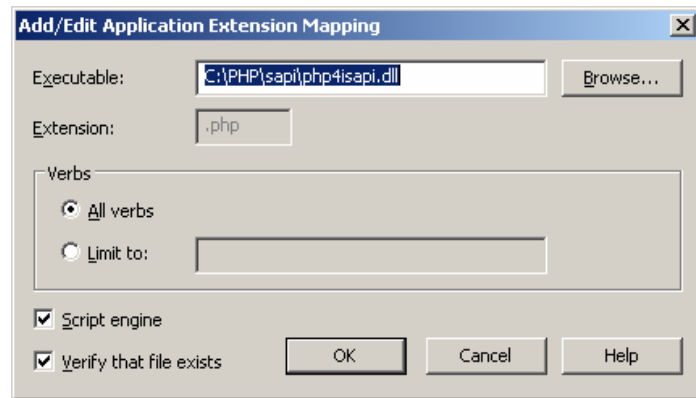


Figure 13 – Mapping the application extension

**Step 3.** Restart the IIS service

Right-click the service, point to All Tasks, and select Restart IIS...

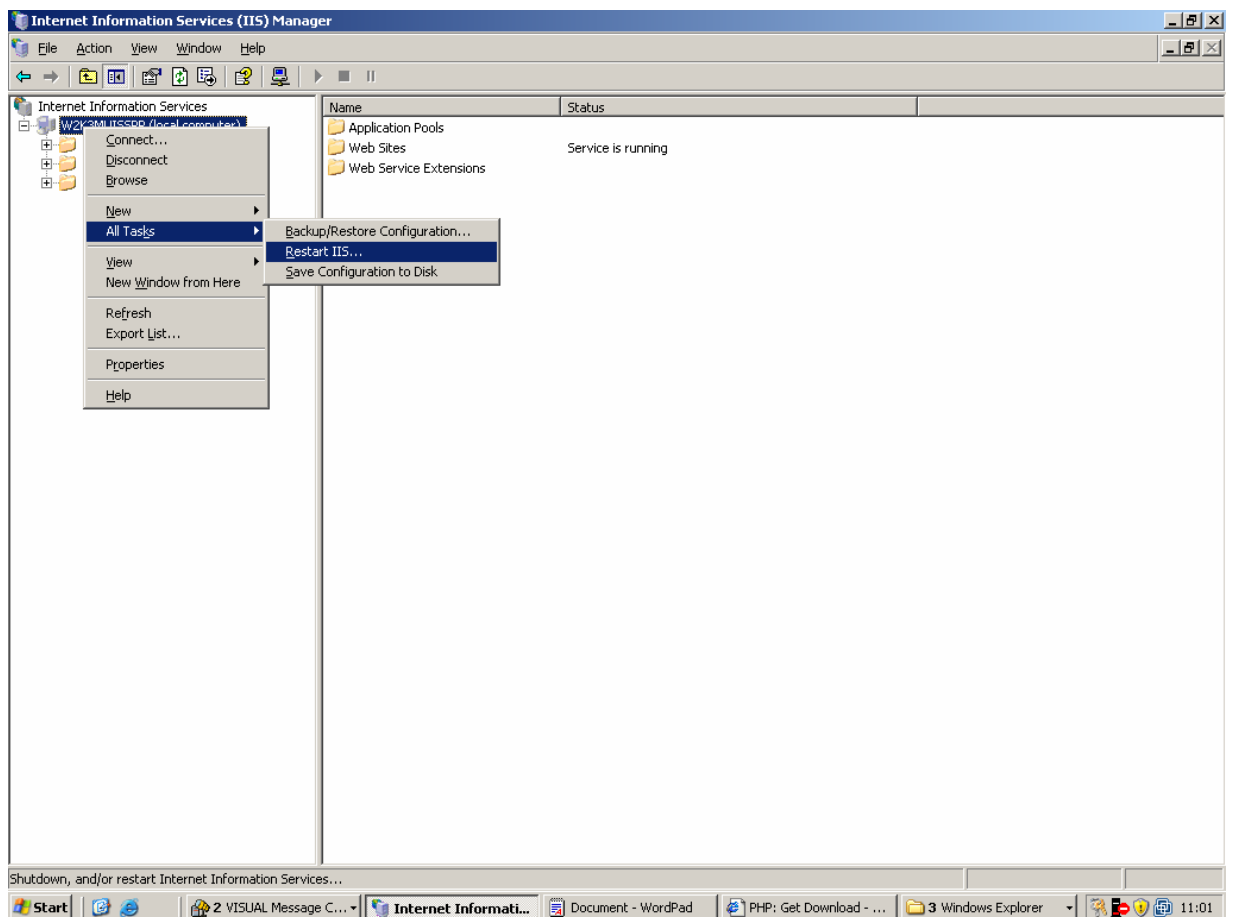


Figure 14 – Restarting the IIS service

## 4.3 Security Considerations

When a Web site is accessed anonymously, by default, IIS uses the local user IUSR\_COMPUTERNAME to access hard disk files. If the user authentication fails, it will use the user that started the Windows session on the PC used to access the Web.

If the IIS server is not in the same domain as the PC that accesses the Web site, we may encounter authentication errors when connecting to the websmartconsole Web page. In this case, check that the user accessing the Web site anonymously has permission to view all folders containing websmartconsole files (this includes the folders containing the PHP executable and extensions).

**Step 1.** Changing the default anonymous user.

To change the default settings right click the Web site (in our example websmartconsole) and select Properties. Open the Directory Security tab and in the section Authentication and access control, click the Edit button.

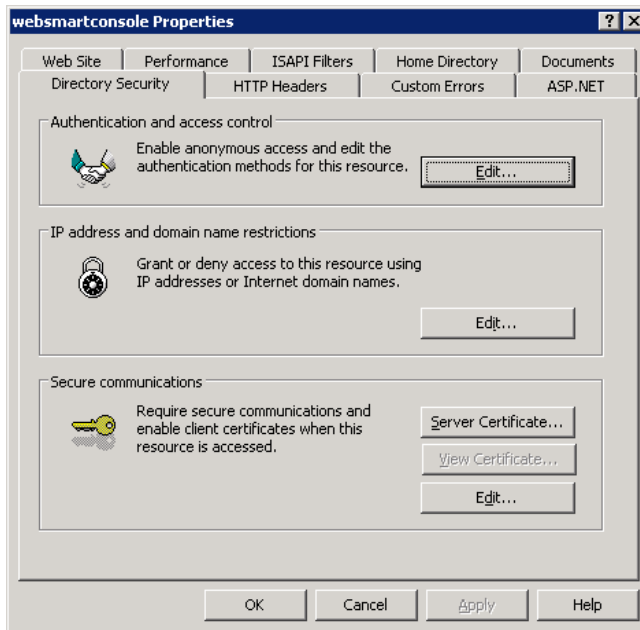


Figure 15 – Editing the authentication and access control

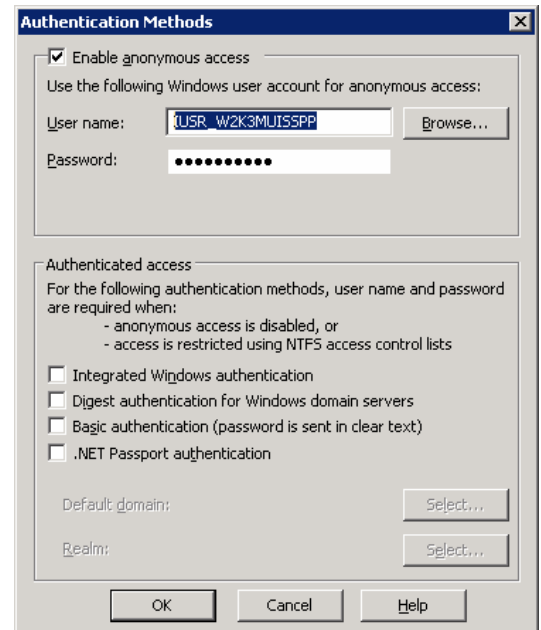


Figure 16 – Allow access to the user IUSR\_COMPUTERNAME

Assuming that we use the default user, the folders containing the web sites files and the PHP executables and extensions must allow access to the user IUSR\_COMPUTERNAME. Click OK to continue.

**Step 2.** Open the Windows Explorer, right-click the folder C:\fast\www, and select Properties. Open the Security tab and click the Advanced button.

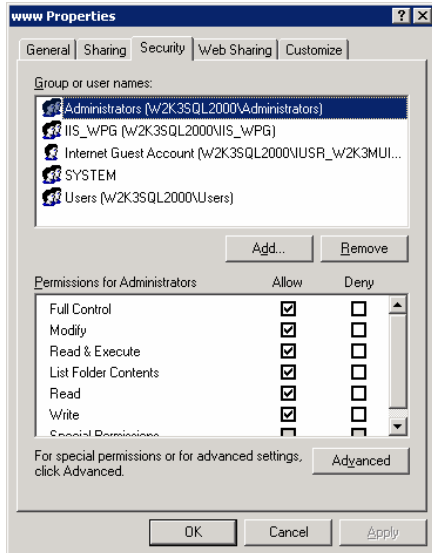


Figure 17 – Opening the advanced folder security settings

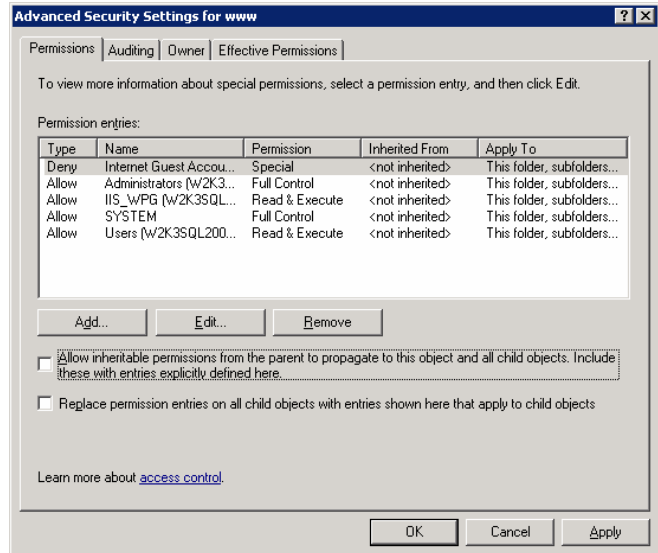


Figure 18 - Advanced folder security settings

In the Permissions tab we clear the option Allow inheritable permissions from the parent ...

Next check the settings for the users

- IIS\_WPG
- Internet Guest Account (IUSR\_COMPUTERNAME)

If the user does not exist yet, use the Add button to add it now. If it already exists position on the user and click the Edit button to check the details.

Both users should be configured as shown in the following figures:

**Important**

When editing the security settings for the users IIS\_WPG and IUSR\_COMPUTERNAME , make sure you select the option **Apply these permissions to objects and/or containers within this container only**

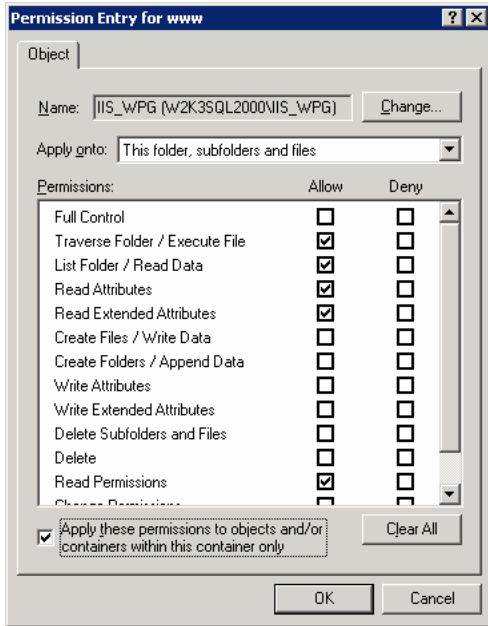


Figure 19 - Permissions for IIS\_WPG

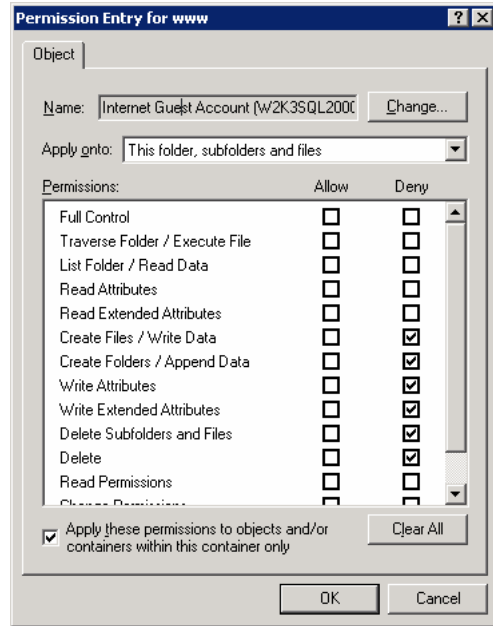


Figure 20 - Permissions for Internet Guest Account

**Step 3.** Finally, repeat step 2 to configure the same permissions for the folder(s) where PHP was installed. By default the folder is C:\PHP.

## 5. About Tango/04 Computing Group

Tango/04 Computing Group is one of the leading developers of systems management and automation software. Tango/04 software helps companies maintain the operating health of all their business processes, improve service levels, increase productivity, and reduce costs through intelligent management of their IT infrastructure.

Founded in 1991 in Barcelona, Spain, Tango/04 is an IBM Business Partner and a key member of IBM's Autonomic Computing initiative. Tango/04 has more than a thousand customers who are served by over 35 authorized Business Partners around the world.

### Alliances



### Partnerships

- IBM Business Partner
- IBM Autonomic Computing Business Partner
- IBM PartnerWorld for Developers Advanced Membership
- IBM ISV Advantage Agreement
- IBM Early code release
- IBM Direct Technical Liaison
- Microsoft Developer Network
- Microsoft Early Code Release

### Awards



## 6. Legal notice

The information in this document was created using certain specific equipment and environments, and it is limited in application to those specific hardware and software products and version and releases levels.

Any references in this document regarding Tango/04 Computing Group products, software or services do not mean that Tango/04 Computing Group intends to make these available in all countries in which Tango/04 Computing Group operates. Any reference to a Tango/04 Computing Group product, software, or service may be used. Any functionally equivalent product that does not infringe any of Tango/04 Computing Group's intellectual property rights may be used instead of the Tango/04 Computing Group product, software or service

Tango/04 Computing Group may have patents or pending patent applications covering subject matter in this document. The furnishing of this document does not give you any license to these patents.

The information contained in this document has not been submitted to any formal Tango/04 Computing Group test and is distributed AS IS. The use of this information or the implementation of any of these techniques is a customer responsibility, and depends on the customer's ability to evaluate and integrate them into the customer's operational environment. Despite the fact that Tango/04 Computing Group could have reviewed each item for accurateness in a specific situation, there is no guarantee that the same or similar results will be obtained somewhere else. Customers attempting to adapt these techniques to their own environments do so at their own risk. Tango/04 Computing Group shall not be liable for any damages arising out of your use of the techniques depicted on this document, even if they have been advised of the possibility of such damages. This document could contain technical inaccuracies or typographical errors.

Any pointers in this publication to external web sites are provided for your convenience only and do not, in any manner, serve as an endorsement of these web sites.

The following terms are trademarks of the International Business Machines Corporation in the United States and/or other countries: AS/400, AS/400e, iSeries, i5, DB2, e (logo)@Server IBM ®, Operating System/400, OS/400, i5/OS.

Microsoft, SQL Server, Windows, Windows NT, Windows XP and the Windows logo are trademarks of Microsoft Corporation in the United States and/or other countries. Java and all Java-based trademarks and logos are trademarks or registered trademarks of Sun Microsystems, Inc. in the United States and/or other countries. UNIX is a registered trademark in the United States and other countries licensed exclusively through The Open Group. Oracle is a registered trade mark of Oracle Corporation.

Other company, product, and service names may be trademarks or service marks of other companies.