



## Consolidated Windows and iSeries performance management made simple

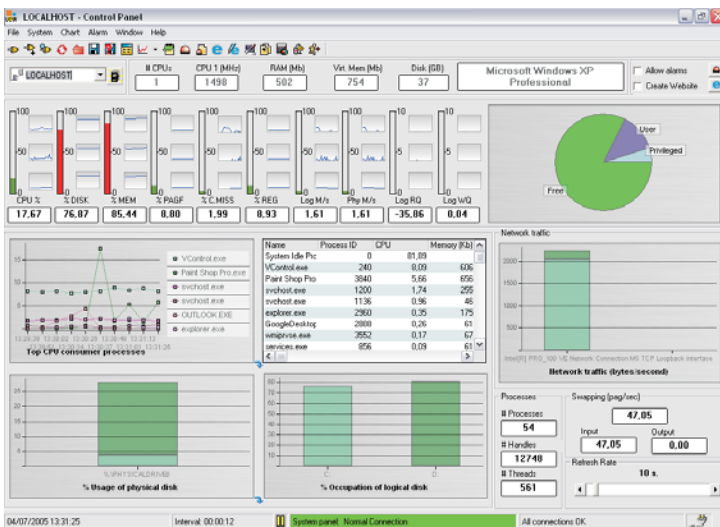
Need to optimize the availability and response time of your IT systems and applications? Are you committed to strict Service Level Agreements? Do you dream of consolidating the vital signs of all your Windows servers in a single console? How about viewing the CPU, disk, memory and jobs of your iSeries, Linux or Unix systems in the same window?

For ten years, hundreds of companies have used our award-winning performance management platform to minimize unplanned downtime, ensure the highest availability, guarantee service levels and leverage business processes in iSeries based infrastructures.

With VISUAL Control for Windows, all this power is now available for Windows systems and SNMP devices. For the first time, IT departments can concurrently control from the same easy to use graphical interface, any number and combination of iSeries, Windows servers and SNMP devices.

Get alerted immediately to potential problems and solve them in a snap!

- Identify performance bottlenecks easily**  
 VISUAL Control for Windows gives you real time performance monitoring of multiple iSeries and Windows servers and partitions, with practically no overhead. Monitor CPU usage, memory, processes, hard drives, operating systems and more...
- Performance Expertise in a Box**  
 A predefined set of gauges and alerts allow you to start monitoring critical metrics (Vital Data) out of the box, regardless of your performance expertise. It gives you detailed explanations of alerts, including technical impact and proposed solutions.
- Take corrective action before your business is affected**  
 Abusive users, full disks, interactive thresholds, memory faults... whatever is the cause, you will receive prompt notice of deviations and potential problems. Take action manually or automatically to correct the causes so your end users are not affected.
- Take control over jobs and processes**  
 You can define and modify priorities for any job or process performed in your servers. Give high priority to critical jobs and lower the priority of less urgent processes.
- Real-time Performance Monitoring**  
 Many products promise real time monitoring, but collection intervals are usually several minutes long. Visual Control for Windows, on the contrary, can retrieve data at customizable intervals (down to near zero seconds).
- Justify upgrades**  
 Running out of resources? VISUAL Control for Windows can detect your needs, and create convincing charts to be shown to senior management.



A complete and intuitive view of the vital signs of a Windows server

### Why do you need VISUAL Control for Windows?

- You need to predict and prevent in real-time any IT operational slowdown before it damages your business.
- Service Level Agreements (SLA) get stricter and more challenging every day. Measurable improvements are demanded to reduce costs, get quicker, better results and improve customer satisfaction.
- As your business grows, you need an effective tool to evaluate and plan your future IT requirements.

distributed by

VISUAL Control for Windows is a Tango/04 solution that enables companies to manage and control systems and applications, optimizing performance and reducing operating costs.

For more information about VISUAL Control for Windows and other Tango/04 solutions, visit [www.tango04.com](http://www.tango04.com)

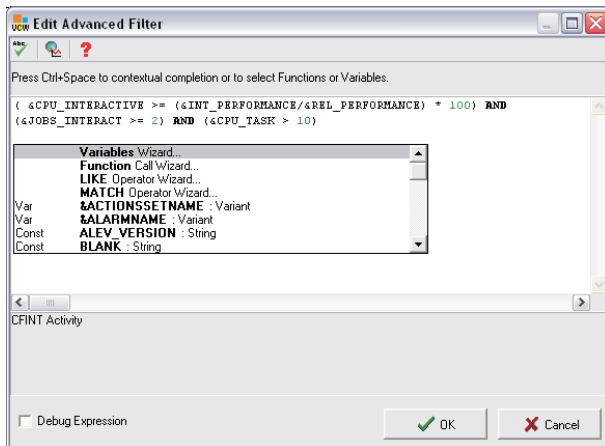


Solutions for Advancing People

## Flexible Performance Management

Although built as a ready to use solution, VISUAL Control for Windows offers unique programming tools so you can align it with your business scenario.

Use SNMP traps and system commands to monitor Linux, Unix and AIX systems, as well as routers and any SNMP network devices. With the ALEV logical expression editor, you can easily specify your own requirements, thresholds and alert conditions.

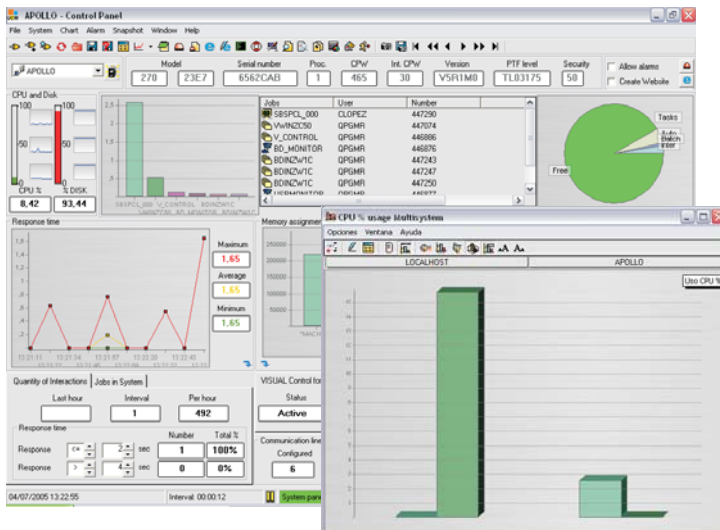


*With the ALEV editor you can customize performance management to meet your scenarios*

## Your IT infrastructure's pilot cockpit

The graphical console is the performance "cockpit" displaying key performance parameters onscreen, giving the information in real-time, in color and with fully customizable views.

Users can see at a glance the vital signs of as many servers as needed, combining both iSeries and Windows systems. All the views feature historical tracking of parameters.



*Comprehensive iSeries performance monitoring now integrates Windows metrics in the same charts*

## Autonomic computing capabilities

When a key performance threshold is passed VISUAL Control for Windows can trigger alarms and proactive actions according to custom specified levels and variables.

## Service Level Reporting

The embedded Reporting System allows easy creation of performance portlets and reports in any standard format with historical correlation features.

## What's new in VISUAL Control for Windows?

- Monitor iSeries and Windows servers but also Linux, Unix and AIX systems, as well as any network device supporting SNMP.
- Heterogeneous multisystem views help you control the vital signs of all your servers at a glance.
- With the embedded ALEV technology, variables, thresholds and alerts can be customized to meet real scenarios and exceptions.
- Uses the WMI protocol, not requiring to install any software on the monitored Windows servers.
- New microcharts display recent critical performance data and trends.

## Technical Overview

- **Predefined Control Panel - Install and Play!**  
Provides you with the most important indicators of system activity right out of the box:
  - CPU usage data: % used by job type
  - Top 10 CPU abusive users
  - Top 10 CPU abusive jobs
  - Disk usage
  - Response times
  - SLA checking
  - Jobs (per job type, user, subsystem and job queues, output queues)
  - Memory per job
  - Memory per activity level
  - Extensive memory pool data
  - LPAR usage
  - Communication lines, and many more...

- **User defined data collection**  
Open architecture that allows for inclusion of end user data (like Web hits, Windows disk usage), or to select from an extensive list of available metrics (Including IOP usage, disk arm occupation, network adapter usage, and many more).

- **Proactive commands**  
Automatically solve problems by executing commands on local or remote systems.

- **Get the message with Flexible Alert Management**  
Be notified by a sound, a pop up window, an email or SMS message. Escalate alerts and configure them according to your custom security policies.

- **Internet enabled**  
Instantly display performance charts on your Intranet or feed them to your WebSphere Portal Server.