



Security and Systems Management Spotlight

By Mary Weiss

What's Better than Sliced Bread? VISUAL Control for Windows Release 8.0



VISUAL Control for Windows (VCW) is the ultimate Graphical Console for your vital iSeries Systems Performance Metrics. VCW provides real-time automated monitoring of multiple iSeries servers or partitions. It collects, analyzes, and reacts to thousands of performance metrics many times per minute.



Release 8.0 is now available, and it adds some impressive new function to these already-great features:

- Real-time performance retrieval of up to 999 systems or partitions
- Retrieval of more than 2,000 performance metrics
- Control of interactive service levels
- Control of CFINT triggering

- Complete set of predefined alerts and control panels
- Custom settings for threshold levels and alarms for systems and partitions
- Job capture functions for abusive job identification and control
- Snapshot for advanced record and playback functionality
- Open to included custom-defined metrics
- Point-and-click ease of use.

New Performance Metrics

VCW 8.0 collects more than 2,000 different metrics. Among the new metrics are the Interactive CPU percentage used, interactive CPU percentage free, memory per active thread, CPU usage per active thread, current assigned CPW per partition, average page faulting per active thread, job worst and best response time, and much more.

New "Top Five Pools" View

Additional views of the top five memory pools by size, page faults, and response time now provide easier VISUALization of the most active pools. This is especially useful when a system has several memory pools.

VISUAL Indication of Trespassed Thresholds

Each threshold chart now has a "Make visible when threshold is exceeded" option. This lets the operator set limits for performance thresholds by defining a red horizontal line for each chart. When a value exceeds the threshold, the chart background changes color, the value becomes red, and the chart window moves to the top of the desktop, automatically alerting the operator to a critical event. The graphical thresholds are easily customized, and settings are saved when you open a new VCW session.

Multi-system Control Panels (LPAR Compatible)

Users can now fully customize Dashboards, choosing the systems or partitions to monitor and selecting corresponding real-time performance metrics from more than 500 different measurements taken at each interval. Each window can show several charts, and each chart can include several variables. You can work with all systems in the multi-system list, or create a sub-set of them (for example, logical partitions). The new release also includes composite data indicators, along with VISUAL indication of customer guidelines, automatic resizing, and detailed mouse-over information.

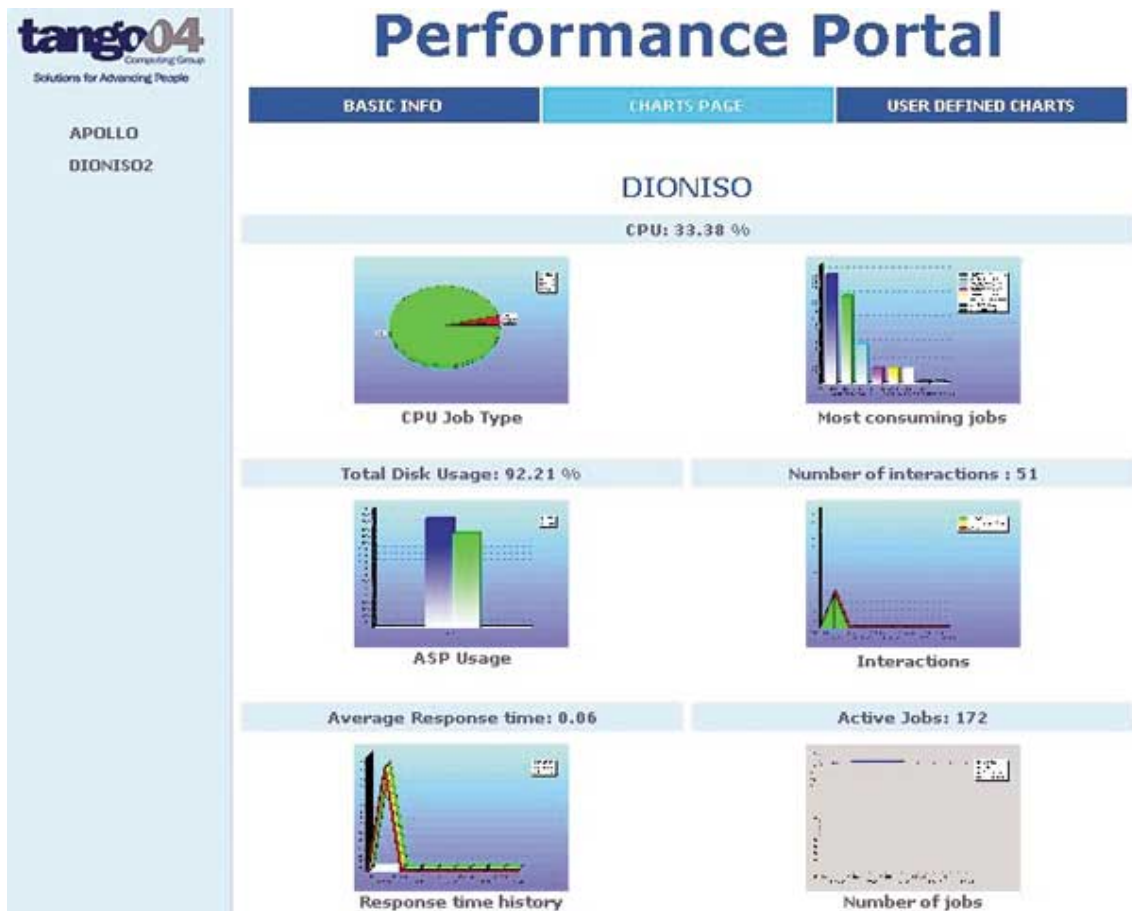
Advanced Formatting for Tooltips

Tooltips were introduced in VCW 7.6.1, and have been enhanced in Release 8.0. Tooltips give users a quick, customized system overview and a summary of relative data, accompanied by two graphs displaying the requested information. You can now create your Tooltips in Rich Text Format, allowing for advanced formatting options.

Automated Creation of Web-Based Performance Portals

VCW Release 7.0 introduced features for creating a Web site for your performance-related documents and charts. With Release 8.0, a "Create Web Site" tab now appears on the main VCW user screen. With the features on this tab, you can quickly set up and maintain a corporate Web site or Intranet from which you can monitor the vital performance information for one or more systems or LPARs using your Web browser or a hand-held

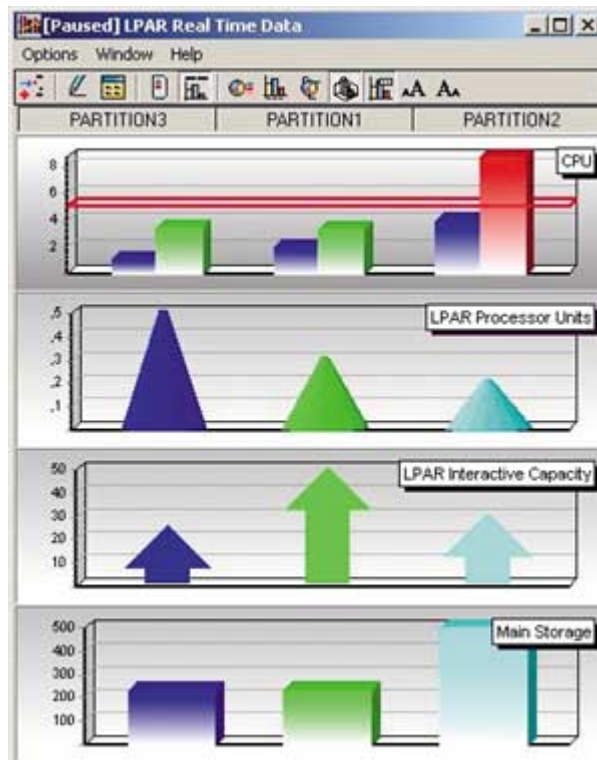
device — without installing VCW on multiple PCs! The Web sites are fully customizable and include a full-featured HTML parser and pre-defined templates for fast, easy setup.



VISUAL Control for Windows 8.0 generates fully customizable Web-based Performance Portals both in HTML, XML or WML, so service level data is accessible to end users, management, IT staff, and even third parties. Cell phone and pocket PC devices are supported.

Full LPAR Support

New LPAR Metrics, including partition type, assigned processor units, interactive capacity, CPU usage (interactive and total), and more can now be retrieved in real time. A new panel graphs information about one or more LPARs on your system.



Easy-to-create, custom graphs show all relevant information about real-time LPAR performance. You can monitor multiple boxes and partitions at a glance!

Snapshot Rapid Investigator

VCW Snapshot now includes a new "Rapid Investigator" toolbar, which quickly takes you back in time to inspect and diagnose past performance problems. Navigate easily to the first, previous, next, or latest Snapshot recording. With "Film Mode" you can easily review all the performance details of past intervals, including the new Top Ten job data windows and custom user data values, to identify bottlenecks and abuses that are contributing to poor or unpredictable system response time.

VISUAL Control for Windows fully integrates with VISUAL Control for Jobs, Pools, LPAR Tuner, Graphical Analyzer, VISUAL Message Center, VISUAL Support Pro, and VISUAL Debugger for Windows.

Call us to order your VISUAL Control for Windows Release 8.0 upgrade. For more information or a trial copy of VCW 8.0, contact your Sales representative at 1-603-924-8818 ext. 1.